

Eaton 9135 UPS



Product snapshot

Power rating: 5 kVA/3.5 kW; 6 kVA/4.2 kW

Voltage: 230V nominal,
200–250 Vac range

Frequency: 50/60 Hz (auto-sensing)

Configuration: Rackmount (3U) or tower

Advanced power protection for:

- Medium-density data centers
- Banking and security systems
- Manufacturing process control
- Retail point-of-sale systems
- Telecommunications/VoIP equipment.

Features

- Provides clean, continuous power to protect critical equipment and applications from power-related downtime, data loss and corruption, and process interruption
- Saves valuable rack space by delivering 5000 - 6000 VA/4200W in only 3U
- Offers deployment versatility through rack and tower installation options with rail kits and pedestals provided
- Increases availability with hot-swappable batteries and power module
- Offers extended battery runtime options to power essential systems for more than an hour during an outage
- Simplifies UPS monitoring and management with a bright LCD user interface, intuitive LanSafe® & NetWatch software
- Provides two-year limited warranty

The Eaton® 9135 UPS, Powerware® series, resolves utility power problems and supplies continuous, conditioned power. You get clean power for valuable IT and networking equipment, battery backup to gracefully handle utility outages, and on-demand visibility into UPS status from anywhere.

Get more usable power for less cost

The 9135 provides exactly the level of power protection needed under the conditions of the moment—optimizing for both efficiency and performance. The more efficient the UPS, the lower your utility and cooling bills.

Under normal power conditions, the UPS can operate in high-efficiency mode at up to 97 percent efficiency. In double conversion mode, the UPS operates at up to 91 percent efficiency.

Double-conversion design for superior reliability and protection

In double conversion mode, the 9135 is constantly monitoring power conditions—regulating both voltage and frequency. Even when presented with the most severe power problems, this UPS's output remains within two percent of nominal voltage.



Powering Business Worldwide



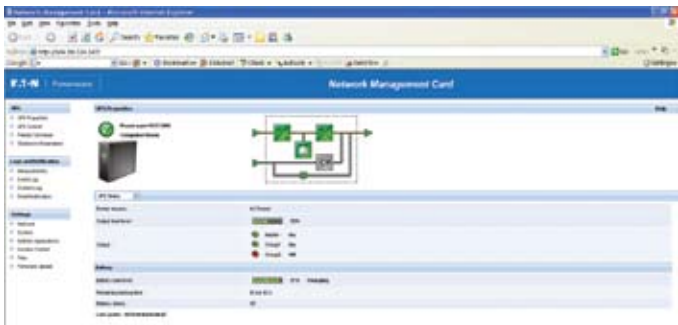
Rack model and EBM installation



Hot swappable batteries



Load segments



ConnectUPS-MS Network Management Card web interface

With a wide range of acceptable input voltages, this UPS does not depend on batteries to smooth out power fluctuations. Batteries are conserved for those times when utility power is highly unstable or completely out. If an outage occurs, the 9135 transfers to battery with no break in power, making this an ideal UPS for equipment sensitive to voltage fluctuations.

More power in less space

High power density. The 9135 increases power density, delivering 5000 - 6000 VA/4200W in only 3U of rack space, freeing more rack space for IT and telecom equipments. Rail kits and tower pedestals are included with every 9135 for flexible installation.

This UPS is even more user-friendly than its predecessors offering greater distribution capabilities, with eight IEC 10A & two IEC 16A outlets to power multiple pieces of equipment without a PDU.

You can combine the 9135 with an Eaton enclosure PDU (ePDU™) to power an entire rack of equipment from a single power cord input. ePDU outlets can be monitored, switched, sequenced and managed individually, providing maximum flexibility in distributing power from the 9135.

Maximum availability for critical systems

Battery runtime for minutes or hours. During a power outage, internal batteries in the 9135 keep loads running long enough to gracefully shut down systems. Add up to four external battery modules (EBMs) to deliver more than an hour of extended runtime at full load—or hours under lighter loads. Each EBM occupies only 3U of rack space. These battery modules are hot-swappable and can be replaced at any time without interrupting UPS operation and load protection.

Maximum battery runtime for critical equipments. LanSafe power management software enables independent control of load segments. With this feature, you can manage scheduled shutdowns and sequential startups of protected loads. During a power outage, you could shut down power to less essential loads to extend battery backup time for more critical devices.

When the load segments feature is used with optional ConnectUPS-MS connectivity cards, users can remotely re-boot locked-up network equipment. Simply access the ConnectUPS-MS card over the network, and toggle the password-protected load segment controller to get your network back online.

Service without downtime. The 9135 features hot-swappable components and an automatic internal bypass. The UPS automatically switches to an alternate power path within the unit if it senses a trouble condition with an internal component. Users can even remove and replace the battery and power modules without powering down the UPS or interrupting power to loads.

Visibility, control and management from anywhere

Local UPS status at a glance. An intuitive LCD interface provides detailed information and menu-driven functions for UPS management. The entire display rotates for the best orientation, whether the UPS is used vertically as a tower unit or horizontally in a rack. The blue, backlit LCD screen displays four lines of alphanumeric information. LEDs clearly display UPS status:

- Load Protected
- Downgraded Operation
- Load Not Protected
- UPS ON/OFF button

Choice of connectivity options. Connectivity options are available for almost any networking environment. The standard unit comes with USB and RS-232 serial communication ports and a DB-9 dry contact port. You can customize your UPS by adding MS-slot interface options for other types of communications, such as:

- A direct connection to the Ethernet network and the Internet, with the ability to monitor and manage the UPS from a standard Web browser
- Serial connection for monitoring and graceful shutdown of up to five servers running various operations systems
- Serial connection for simple alarm notification via isolated contacts to signal a change of state in UPS operation (typical in IBM® eServer® iSeries applications)

Unified management for power protection. The 9135 comes complete with the Eaton Software Suite CD, including SNMP-compatible LanSafe power management software. LanSafe provides control and visibility over multiple UPSs, using an intuitive, graphical interface. From a central vantage point anywhere within the reach of a network connection, you can:

- Establish prioritized shutdown of network devices and client/server applications
- Test all network-connected UPSs from one node
- Stay informed of power problems via email broadcasts



LCD rotatable display



Web/SNMP card with ModBus



Web/SNMP card



Relay/serial interface card

MODELS

| Catalog number | Style number | Rating (VA/Watts) | Input plug | Output receptacles | Dimensions H x W x D, mm | Weight, kg |
|---------------------------------|----------------|-------------------|------------|------------------------------|--------------------------|------------|
| Rack Tower Models | | | | | | |
| PW9135G5000-XL3UEU | 103006721-6591 | 5000/3500 | Hardwired | Hardwired + (2) C19, (8) C13 | 130 x 444 x 741 | 57 |
| PW9135G6000-XL3UEU | 103006722-6591 | 6000/4200 | Hardwired | Hardwired + (2) C19, (8) C13 | 130 x 444 x 741 | 57 |
| Extended Battery Modules | | | | | | |
| PW9135N6000-EBM3U | 103006723-6591 | NA | NA | NA | 130 x 444 x 650 | 77.5 |

BATTERY BACKUP TIMES (IN MINUTES)

| Loads (VA/Watts) | Standards Internal Batteries | +1 EBM | 2 EBMs | +3 EBMs | +4 EBMs |
|------------------|------------------------------|--------|--------|---------|---------|
| 1000/700 | 36 | 132 | 232 | 332 | 433 |
| 2000/1400 | 13 | 52 | 95 | 140 | 184 |
| 3000/2100 | 10 | 40 | 74 | 110 | 146 |
| 4000/2800 | 7 | 29 | 53 | 80 | 107 |
| 5000/3500 | 5 | 22 | 41 | 62 | 83 |
| 6000/4200* | 4 | 18 | 33 | 50 | 68 |

* Runtimes available for the 6 kVA model only.

Technical specifications

General

| | |
|----------------|--|
| User interface | Graphical LCD with blue backlight and text in English, French, German, Portuguese, Italian and Spanish |
| LEDs | Four status-indicating LEDs |
| Topology | Double-conversion |
| Diagnostics | Full system self-test |
| UPS bypass | Automatic bypass |
| Dimensions | See models selection guide |
| Rail kit | Included with all units |

Electrical Input

| | |
|----------------------------------|--|
| Nominal voltage | 230V 220V-240V user selectable |
| Voltage range | 156–280 Vac (output PF 0.7) |
| Power draw of UPS (full load) | 5000VA: 21.7A @230V 6000VA: 26A @230V |
| Recommended input-breaker rating | 35A |
| Frequency | 50/60 Hz autoselect |
| Frequency range | 40–70 Hz |

Electrical Output

| | |
|----------------------|--|
| Power factor | 0.7 |
| On utility voltage | ±2% of nominal regulation |
| On battery voltage | ±2% of nominal regulation |
| Efficiency | >97% in high-efficiency mode; 91% in normal mode |
| Frequency regulation | ±3% Hz online |
| Load crest factor | 3 to 1 |

Battery

| | |
|--------------------------|---|
| Internal battery type | 5.5Ah, sealed, lead-acid; maintenance free |
| External battery modules | Up to four per 9135, rail kits included for rack mounting |
| EBM battery type | 5.5 Ah, sealed, lead-acid; maintenance free |
| Battery runtime | Four (4) minutes with internal batteries @100% load (0.7 PF) For additional details, see battery runtime chart |
| Battery recharge time | Six (6) hours to recover 90 percent of nominal backup time after 100 percent RCD load discharge |
| Battery replacement | Hot-swappable internal and external batteries |
| Start-on-battery | Allows start of UPS without utility input |

In the interests of continual product improvement all specifications are subject to change without notice.

Communications

| | |
|------------------------------|---|
| Serial port | RS-232 standard, RS-232 cable provided |
| USB port | HID standard, for communicating with Windows XP/Vista |
| Relay output | DB-9 Dry Contact-common alarm standard |
| Software | LanSafe & NetWatch monitoring and management software |
| Optional communication cards | ConnectUPS-MS Network Management Card for direct control and monitoring in SNMP-based networks ConnectUPS-MS Card with ModBus RTU interface Serial Management Card-MS for integration to industrial environment and building management systems, remote shutdown for IBM AS/400 systems |

Environmental

| | |
|---------------------|---|
| Safety markings | CE, GS |
| EMC | IEC/EN 62 040-2 class A |
| Audible noise | Max 46 dB |
| Ambient operating | 0°C to +40°C |
| Storage temperature | -20°C to +40°C with batteries and -25°C to +55°C without batteries |
| Relative humidity | 5–90% non-condensing |

Heat dissipation (BTUs/hr)

| Operating mode | Efficiency | 5 kVA | 6 kVA |
|-----------------|------------|-------|-------|
| Normal | 91% | 1150 | 1350 |
| Battery | 86% | 1650 | 1960 |
| High efficiency | 97% | 370 | 450 |



BELGIUM

Tel: +32 (0) 2 348 44 10
Belgium-info@eaton.com

Tel: +32 15 44 55 00
UPSsmuizenBE@eaton.com

CZECH
Tel: +420 272 760 365
UPSInfoCzech@eaton.com

DENMARK
Tel: +45 3686 7910
UPSSalesDenmark@eaton.com

FINLAND
Tel: +358 9 452 661
PowerwareMyynti@eaton.com

FRANCE
Tel: +33 1 60 12 74 00
powerware.france@eaton.com

GERMANY
Tel: +49 7841 6040
infoGermany@eaton.com

ITALY
Tel: +39 02 95542 309
marketingemlp@eaton.com

MOROCCO
Tel: +212 22 95 77 40
Fax: +212 22 95 77 41

NORWAY
Tel: +47 23 03 65 50
SalesNorway@eaton.com

POLAND
Tel: +48 22 331 85 24
upsalespoland@eaton.com

PORTUGAL
Tel: +351 21 421 74 30
Fax: +351 21 421 74 29

THE NETHERLANDS
Tel: +31 (0) 180 41 57 11
Fax: +31 (0) 180 41 06 36
www.powerware.nl

RUSSIA
Tel: +7 495 981 37 70
UPSRussia@eaton.com

SLOVAKIA
Tel: +421 2 4463 7046
InfoSk@Eaton.com

SPAIN
Tel: +34 93 475 32 03
info.es@eaton.com

SWEDEN
Tel: +46 8 598 940 00
infosweden@eaton.com

UAE
Tel: +971 4 881 19 33
Fax: +971 4 881 19 39

UNITED KINGDOM
Tel: +44 1753-608 700
acukpowerware@eaton.com