

# Eaton 9130 UPS



## Product snapshot

<b>Product rating:</b>	700 to 3000 VA
<b>Voltage</b>	220-240 V
<b>Frequency:</b>	50/60 Hz (auto-sensing)
<b>Configuration:</b>	Rackmount or tower

### Advanced power protection for:

- IT and networking environments
- Servers, networking gear
- Telecommunications, VoIP, security systems
- Medical systems
- Diagnostics and medical screening
- Patient record archives
- Manufacturing systems
- Chip fabrication
- Pharmaceutical production
- Chemical processing

## Features

- Protects against downtime, data loss and process interruption by providing continuous, clean power
- Offers premium performance with a 0.9 power factor and >95 percent efficiency
- Increases battery service life and system uptime with ABM™ battery charging technology
- Enables prolonged runtime of essential equipment during power outages by allowing for orderly, remote shutdown of non-critical systems or processes
- Provides installation flexibility with a choice of rack or tower designs, both conserving valuable space
- Ensures data and system integrity with LanSafe® & Netwatch power management software
- Enhanced monitoring and configuration capability through easily navigated multilingual graphical display

The Eaton® 9130 UPS, Powerware® series, resolves utility power problems and delivers superior power protection for IT and networking equipment, medical systems, manufacturing process control—or anywhere critical equipment and applications require clean, continuous power.

### Double-conversion design for superior power protection

The 9130 is constantly monitoring power conditions—regulating both voltage and frequency. Even when presented with the most severe power problems, this UPS's output remains within three percent of nominal voltage.

With a wide input voltage range, the 9130 does not depend on batteries to smooth out minor power fluctuations. Batteries are conserved for those times when utility

power is highly unstable or completely out. If an outage occurs, the 9130 transfers to battery with zero interruption in power, making this an ideal UPS for sensitive and critical equipment.

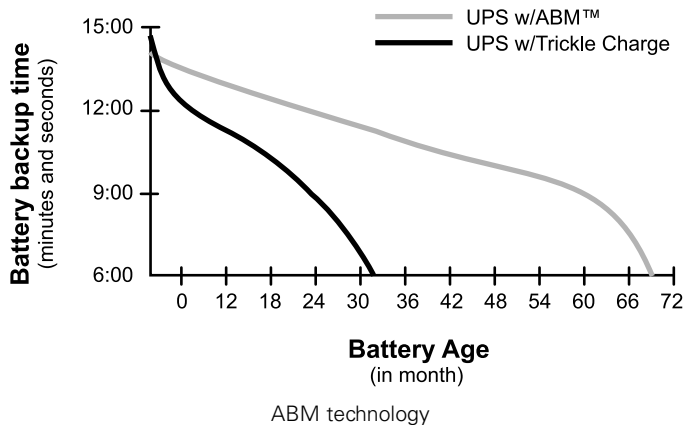
### More real power for less cost in less space

**More real power.** High 0.9 output power factor enables the 9130 to provide its full power capability to modern IT equipment that may have a wide range of leading and lagging power factors. With a 0.99 input power factor, this UPS avoids the disturbances that some energy converters tend to cause.

**High efficiency.** The more efficient the UPS, the lower your utility and cooling bills. When power conditions are within acceptable limits, the 9130 can operate in a high-efficiency mode providing 95 percent or higher efficiency.



*Powering Business Worldwide*



Load segments



Multilingual LCD

**One platform, two form factors, dozens of choices.** Up to 3000 VA of UPS power is packed into only 2U of rack space. The tower option is about the size of a modern, compact PC.

### Maximum availability for critical systems

**Stronger, longer battery life.** Eaton Advanced Battery Management (ABM) technology uses sophisticated sensing circuitry and an innovative three-stage charging technique, that constantly monitors the battery charging status, and as a result only recharges when necessary, so ultimately the battery experiences less corrosion and battery service life is prolonged by up to 50%.

The 9130 provides up to 60 days' notice of the end of useful battery service life. You have ample time to hot-swap batteries without ever having to shut down connected equipment.

**Battery runtime for minutes or hours.** During a power outage, internal batteries in the 9130 keep loads running long enough to gracefully shut down systems. Add more runtime at any time, with up to four external hot-swappable battery modules to run systems for hours if necessary.

**Maximum battery runtime for critical equipments.** Using LanSafe power management software, you can independently control load segments, which enable you to manage scheduled shutdowns and sequential startups of protected loads. During a power outage, you could shut down power to non-critical devices, thereby extending battery backup time available for critical devices. You can also use this feature to remotely re-boot locked-up equipment.

### Visibility, control and management from anywhere

**Continuous monitoring for premium availability.** The 9130 continually monitors voltage, temperature, internal element functions, battery health, battery state-of-charge and runtime remaining. If the UPS detects a potential problem with any of these measures, it sends alarms or takes corrective action, with no interruption in power. At the end of an alarm condition, the 9130 automatically reverts from bypass to normal operation.

**Local UPS status at a glance.** An on-site user can configure and monitor many features of the 9130 using a large, bright, backlit display with easy navigation—available in multiple languages. LEDs provide at-a-glance insight into system status.

## BATTERY RUNTIMES

	Internal batteries		+1 EBM		+2 EBMs		+3 EBMs		+4 EBMs	
	100% Load	50% Load	100% Load	50% Load	100% Load	50% Load	100% Load	50% Load	100% Load	50% Load
<b>Rack models</b>										
PW9130i1000R-XL2U	7	14	29	68	51	113	81	192	98	246
PW9130i1500R-XL2U	5	14	24	60	44	68	72	172	89	190
PW9130i2000R-XL2U	6	16	33	71	59	129	88	183	119	260
PW9130i3000R-XL2U	3	9	18	45	34	84	53	122	69	165
<b>Tower models</b>										
PW9130i700T-XL	6	10	N/A	N/A	N/A	N/A	N/A	N/A	N/A	N/A
PW9130i1000T-XL	7	14	29	68	51	113	81	192	98	246
PW9130i1500T-XL	5	14	24	60	44	68	72	172	89	190
PW9130i2000T-XL	10	24	42	91	78	145	100	200	134	270
PW9130i3000T-XL	5	14	24	53	45	95	72	137	90	170

**Remote monitoring.** The 9130 comes complete with the Eaton Software Suite CD including SNMP-compatible power management software. LanSafe, Netwatch and a trial version of PowerVision® provide control and visibility over all your UPS systems, using an intuitive, graphical interface. For example, you can establish a prioritized shutdown of network devices and client/server applications, test all networked UPS systems from one node, and stay informed of power problems by email.

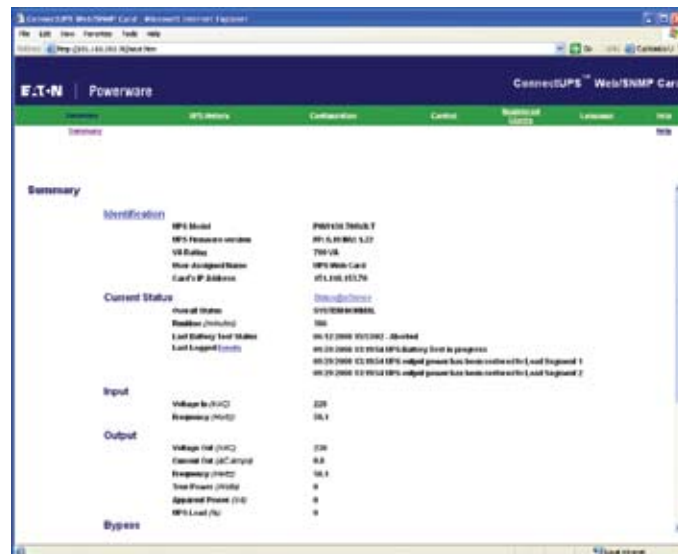
**Choice of connectivity options.** Connectivity options are available for almost any networking environment. The standard unit comes with USB and RS-232 serial communication ports. You can customize your UPS by adding communication cards options that will allow to:

- Integrate the UPS to SNMP based Network Management Systems with a Web/SNMP card and manage it through standard web browsers.
- Monitor and shut down multiple servers with different operating systems
- Send relay-contact alarm notifications to remote security systems

### Complementary options

You can complement your 9130 with several options, among which:

- A maintenance bypass for easy replacement of the UPS without powering down critical systems.
- Power distribution units streamline the distribution of power throughout a data center, rack or enclosure.



ConnectUPS-BD Web/SNMP card interface

### TOWER MODELS

Catalog number	Style number	Rating (VA/Watts)	Input connection	Output receptacles	Dimensions H x W x D, mm	Weight, kg
<b>Tower Models</b>						
PW9130i700T-XL	103006433-6591	700/630	C14	(6) C13	230 x 160 x 350	12.2
PW9130i1000T-XL	103006434-6591	1000/900	C14	(6) C13	230 x 160 x 380	14.5
PW9130i1500T-XL	103006435-6591	1500/1350	C14	(6) C13	230 x 160 x 430	19.0
PW9130i2000T-XL	103006436-6591	2000/1800	C14	(8) C13, (1) C19	325 x 214 x 410	34.5
PW9130i3000T-XL	103006437-6591	3000/2700	C20	(8) C13, (1) C19	325 x 214 x 410	34.5
<b>Tower Extended Battery Modules</b>						
PW9130N1000T-EBM	103006438-6591	NA	NA	NA	230 x 160 x 380	18.5
PW9130N1500T-EBM	103006439-6591	NA	NA	NA	230 x 160 x 430	24.3
PW9130N3000T-EBM	103006440-6591	NA	NA	NA	325 x 214 x 410	50.0

### RACK MODELS

Catalog number	Style number	Rating (VA/Watts)	Input connection	Output receptacles	Dimensions H x W x D, mm	Weight, kg
<b>Rack Models</b>						
PW9130i1000R-XL2U	103006455-6591	1000/900	C14	(6) C13	86.5 x 438 x 450	16
PW9130i1500R-XL2U	103006456-6591	1500/1350	C14	(6) C13	86.5 x 438 x 450	19
PW9130i2000R-XL2U	103006457-6591	2000/1800	C14	(8) C13, (1) C19	86.5 x 438 x 600	29
PW9130i3000R-XL2U	103006463-6591	3000/2700	C20	(8) C13, (1) C19	86.5 x 438 x 600	29.5
<b>Rack Extended Battery Modules</b>						
PW9130N1000R-EBM2U	103006458-6591	NA	NA	NA	86.5 x 438 x 450	22.1
PW9130N1500R-EBM2U	103006459-6591	NA	NA	NA	86.5 x 438 x 450	28.1
PW9130N3000R-EBM2U	103006460-6591	NA	NA	NA	86.5 x 438 x 600	41.1

# Technical specifications

## General

User interface	Graphical LCD with blue backlight and text in English, French, German, Russian and Spanish
LEDs	Four status-indicating LEDs
Topology	True online, double-conversion
Diagnostics	Full system self-test
UPS bypass	Automatic bypass
Dimensions	See models table
Rail kit	Included with all rackmount units

## Electrical Input

Nominal voltage	220–240V
Voltage range	160–276 Vac (with load PF of 0.7)
Power draw of UPS	700: 3.0A @230V 1000: 4.3A @230V 1500: 6.5A @230V 2000: 8.7A @230V 2500: 10.9A @230V 3000: 13.0A @230V

Dedicated circuit breaker rating	700–2000 VA: 10A 3000 VA: 16A
----------------------------------	----------------------------------

Frequency	50/60 Hz
-----------	----------

Frequency range	45–65 Hz
-----------------	----------

## Electrical Output

Power factor	0.9
--------------	-----

On utility voltage	±3% of nominal regulation
--------------------	---------------------------

On battery voltage	±3% of nominal regulation
--------------------	---------------------------

Efficiency	>95% in high-efficiency mode; >86% in online mode
------------	---

Frequency regulation	±3% Hz online
----------------------	---------------

Load crest factor	3 to 1
-------------------	--------

## Battery

Battery type	VRLA 12V/9 Ah (both internal and external)
--------------	--

Battery runtime	See runtime table
-----------------	-------------------

Battery replacement	Hot-swappable internal and external batteries
---------------------	---

Start-on-battery	Allows start of UPS without utility input
------------------	---

## Communications

Serial port	RS-232 standard, for interface to power management software
-------------	---

USB port	HID standard, for communicating with Windows XP/ Vista
----------	--

Relay output	Common alarm standard
--------------	-----------------------

Communications slot	Optional communication slots (BD Slot)
---------------------	--

Optional communication cards	SNMP/Web card for direct control and monitoring in SNMP-based networks, monitoring of UPS status and meters through Web browser interface. Relay card for integration to industrial environment and building management systems, remote shutdown for IBM AS/400 systems
------------------------------	--

## Environmental

Safety markings	CE, GS
-----------------	--------

EMC markings	CE (per IEC/EN62040-2: Emissions, Category C1; Immunity, Category C2)
--------------	---

Audible noise	<50 dB
---------------	--------

Ambient operating	0°C to +40°C
-------------------	--------------

Storage temperature	-20°C to +40°C with batteries and -25°C to +55°C without batteries
---------------------	---

Relative humidity	5–90% non-condensing
-------------------	----------------------

## Heat dissipation

9130 model	Normal mode, BTUs/hr	On battery, BTUs/hr
700 VA	350	554
1000 VA	500	674
1500 VA	750	1011
2000 VA	838	1348
3000 VA	1257	1755

In the interests of continual product improvement all specifications are subject to change without notice.



Eaton, Powerware, ABM, LanSafe, PowerVision and PowerChain Management are trade names, trademarks, and/or service marks of Eaton Corporation or its subsidiaries and affiliates. All other trademarks are the property of their respective owners.

© 2008 Eaton Corporation  
All Rights Reserved  
Printed in Finland  
1018083 rev A  
September 2008



Powering Business Worldwide

**BELGIUM**  
Tel: +32 (0) 2 348 44 10  
Fax: +32 (0) 2 348 44 11

**CZECH**  
Tel: +420 272 760 365  
UPSInfoCzech@eaton.com

**DENMARK**  
Tel: +45 3686 7910  
UPSSalesDenmark@eaton.com

**FINLAND**  
Tel: +358 9 452 661  
PowerwareMyynti@eaton.com

**FRANCE**  
Tel: +33 1 60 12 74 00  
powerware.france@eaton.com

**GERMANY**  
Tel: +49 7841 6040  
infoGermany@eaton.com

**ITALY**  
Tel: +39 02 95542 309  
info@powerware.it

**MOROCCO**  
Tel: +212 22 95 77 40  
Fax: +212 22 95 77 41

**NORWAY**  
Tel: +47 23 03 65 50  
SalesNorway@eaton.com

**POLAND**  
Tel: +48 22 331 85 24  
upssalespoland@eaton.com

**PORTUGAL**  
Tel: +351 21 421 74 30  
Fax: +351 21 421 74 29

**THE NETHERLANDS**  
Tel: +31 (0) 180 41 57 11  
Fax: +31 (0) 180 41 06 36  
www.powerware.nl

**RUSSIA**  
Tel: +7 495 981 37 70  
UPSRussia@eaton.com

**SLOVAKIA**  
Tel: +421 2 4463 7046  
InfoSk@Eaton.com

**SPAIN**  
Tel: +34 93 475 32 03  
info.es@eaton.com

**SWEDEN**  
Tel: +46 8 598 940 00  
infosweden@eaton.com

**UAE**  
Tel: +971 4 881 19 33  
Fax: +971 4 881 1939

**UNITED KINGDOM**  
Tel: +44 1753-608 700  
acukpowerware@eaton.com